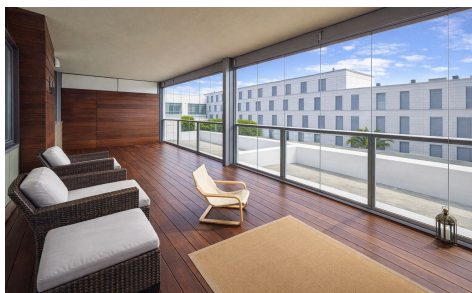




BC51407KG

Apartment in Manilva

€359,000



3



2



162m²



N/A



N/A

This attractive apartment located in the well-established Punta Paloma residential complex in La Duquesa offers an excellent combination of space, comfort, and location. Situated on a middle floor, it features 143 m² of built area and a 28 m² southeast-facing terrace, ensuring abundant natural light throughout most of the day and pleasant views over the communal swimming pool.

The property offers three bedrooms and two bathrooms, with a functional layout ideal both as a permanent residence and as a holiday home. The spacious and bright living-dining area provides direct access to the terrace, which has been partially enclosed with a Lumon system, allowing year-round use, with part of the space converted...(Ask for More Details!)