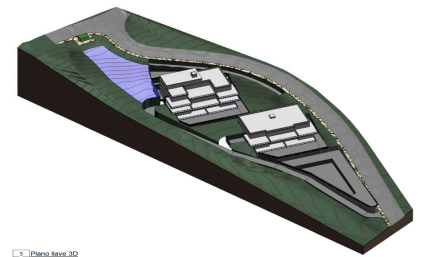




## Land a Plots in Mijas

€1,500,000



0



0



1,704m<sup>2</sup>



4,446m<sup>2</sup>



N/A

Investment plot of 4.446m<sup>2</sup> with buildable 1.704,06m<sup>2</sup> and maximum of 20 units.

Residential Plot, La Mairena, Costa del Sol.

Garden/Plot 4446 m<sup>2</sup>.

Setting : Suburban, Country, Mountain Pueblo, Close To Golf, Close To Sea, Close To Town, Close To Schools, Urbanisation.

Orientation : East, South, South West.

Condition : New Construction.

Views : Sea, Mountain, Panoramic.