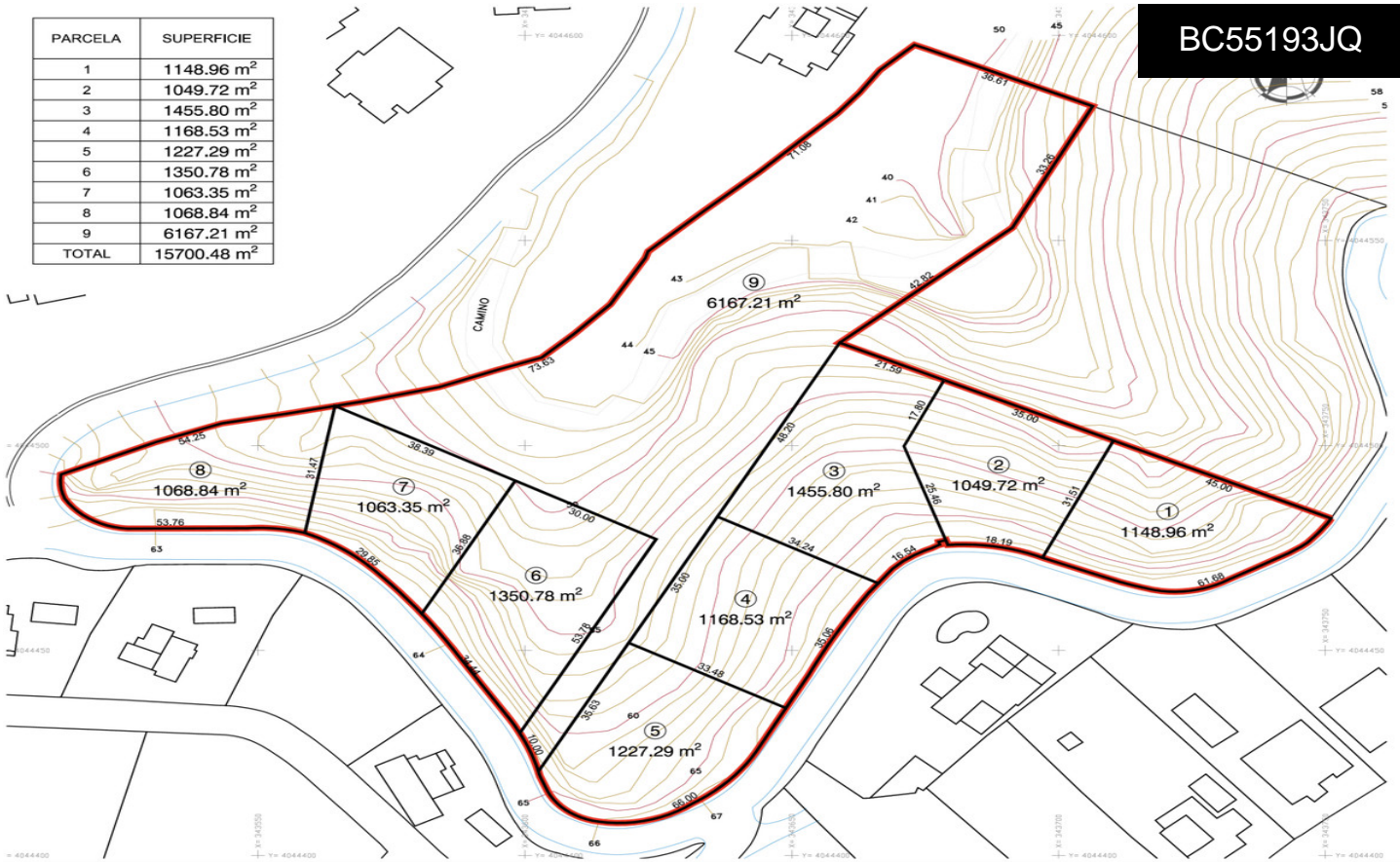


PARCELA	SUPERFICIE
1	1148.96 m ²
2	1049.72 m ²
3	1455.80 m ²
4	1168.53 m ²
5	1227.29 m ²
6	1350.78 m ²
7	1063.35 m ²
8	1068.84 m ²
9	6167.21 m ²
TOTAL	15700.48 m ²

BC55193JQ



Land a Plots in Marbella **€2,355,000**



0



0



3,454m²



15,700m²



N/A

Plot to build 8 villas and townhouses in La Mairena.
 Residential Plot, La Mairena, Costa del Sol.
 Garden/Plot 15700 m².
 Setting : Suburban, Country, Village, Mountain Pueblo, Close To Golf, Close To Sea, Close To Schools, Close To Forest, Urbanisation.
 Orientation : North, North East, East, South West, West, North West.
 Views : Mountain, Country, Panoramic, Garden, Courtyard, Forest.
 Category : Investment, Off Plan, With Planning Permission.