

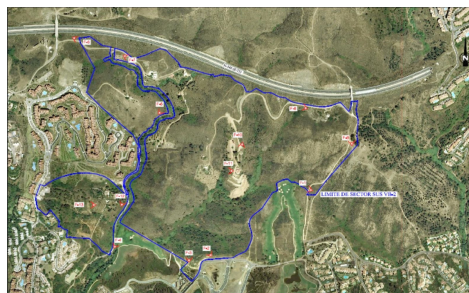
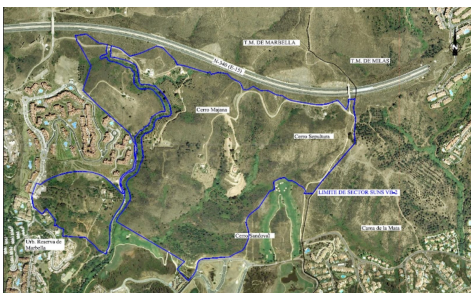
PROPUESTA DE ORDENACIÓN  
SECTOR SUNS.VB-2 FINCA "LA VIZCAINA"  
MARBELLA

BC34523EY



Land a Plots in Marbella

€2,145,800



0



0



N/A



21,458m<sup>2</sup>



N/A

This sector has a total area of 710,458 m<sup>2</sup>, of which 21,458 m<sup>2</sup> corresponds to this farm. It represents 3.02% of rights and obligations.

The sector has a buildable area of 57,234.29 m<sup>2</sup> for Free Income Housing IN LOW DENSITY, 380 houses in Poblado Mediterráneo and 11 isolated houses.

Buildable area of 40,362 m<sup>2</sup> for Hotels.

3,000 m<sup>2</sup> Economic Activities Golf Club and Commercial Area

Which makes a total of 100,596.29 m<sup>2</sup> of surface area. Therefore  $100,596.29 \text{ m}^2 \times 3.02\% = 3,038 \text{ m}^2$  of buildable area, which would correspond to this plot.