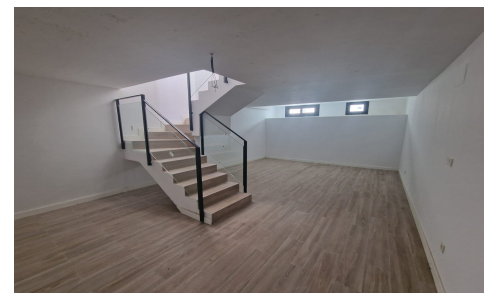


BC61899RJ



**Villa in Manilva**

**€349,000**



2



2



128m<sup>2</sup>



156m<sup>2</sup>



N/A

**VILLA 1**

207.45 m<sup>2</sup> built on a 240 m<sup>2</sup> plot. It has 3 bedrooms, 3 bathrooms, living room, kitchen, terrace, private garden, private garage for 2 vehicles, basement with natural light and excellent sea views.

**SEMI-DETACHED HOUSE 2**

128.25 m<sup>2</sup> built on a 153 m<sup>2</sup> plot. It has 2 bedrooms, 2 bathrooms, living room, kitchen, terrace, private garden, parking area within the plot, basement with natural light and excellent sea views.

**SEMI-DETACHED HOUSE 3**

128.25 m<sup>2</sup> built on a 138 m<sup>2</sup> plot. It has 2 bedrooms, 2 bathrooms, living room, kitchen, terrace,