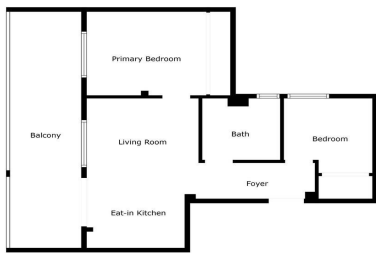




Apartment in Benalmadena

€339,000



Floor Plan Created By Customer App. Measurements Deemed Highly Accurate, But Not Guaranteed.



2



1



52m²



N/A



N/A

Discover a rare opportunity to own a charming penthouse in the heart of picturesque Benalmádena Pueblo - complete with panoramic Mediterranean views and an underground parking space.

The true highlight of this home is the sun-drenched south-facing terrace (18 m²), offering open sea and rooftop views across the whitewashed village. A perfect setting for morning coffee, sunset dinners, and year-round outdoor living.

Inside, the apartment is thoughtfully designed to maximise space and light.

-Bright living area with open-plan kitchen

-Two bedrooms, including a main bedroom with sea views