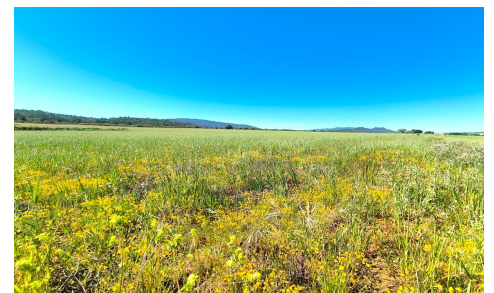


BC53282KR



## Land a Plots in Yecla

€70,000



0



0



N/A



78,233m<sup>2</sup>



N/A

Are you looking for an agricultural or a large building land in a tranquil, accessible, charming area of Spain? Prior used for growing cereals, this currently fallow land (with a few olive trees on it) has an irrigation water connection, and water rights. Tarmac road access, flat terrain, and a fertile soil. Ideal for growing olives, almonds, vine, peaches, apricots, cherries, pears, pistachios, vegetable, or for cattle, sheep, or horse pastures. You can build up to 5% of the land size, certificate of construction comes with the plot and is a condition of purchase.

We can help you with the building design and connect you with architects, builders, solar panels...(Ask for More Details!)