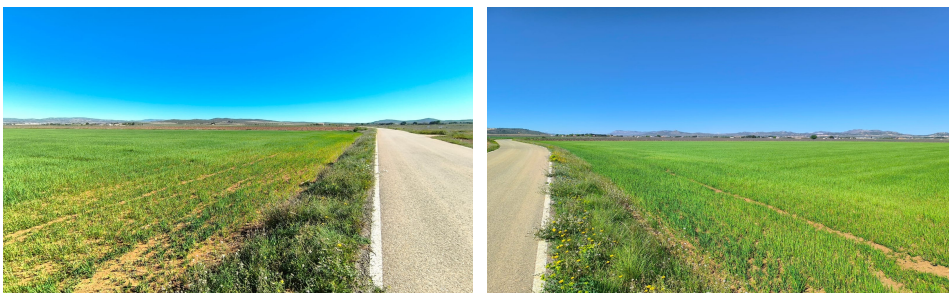


BC32528EP



Land a Plots in Yecla

€67,500



0



0



N/A



49,754m²



N/A

Agricultural & Building land near Yecla. Prior used for growing cereals, this currently fallow land has an irrigation water connection, and water rights. The parcel is square shaped, with a tarmac road access, flat terrain, and a fertile soil. Ideal for growing olives, almonds, vine, peaches, apricots, cherries, pears, pistachios, vegetable, or for cattle, sheep, or horse pastures. You can build up to 5% of the land size, certificate of construction comes with the plot and is a condition of purchase. We can help you with the building design and connect you with architects, builders, solar panels company etc. If you liked this property, do not hesitate to contact us to...(Ask for More Details!)